

Weighing



All components must be weighed :

- 1 part Acrystal Aqua liquid
- 7 parts Acrystal Aqua powders

1. first weigh the Acrystal Prima liquid.
2. (optional) add Acrystal pigments.
3. (optional) add the thixotrop Aqua (maximum 1% of the total weight of the mixture)
4. weigh the Acrystal Prima powders in the mixing bucket.



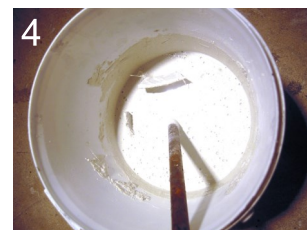
You will obtain the best result, if you calculate the 7 parts of powders on the global liquid weight (Acrystal Aqua liquids + pigments + thixotrop).

Mixing

Use a high shear mixing blade on low speed to mix the product and break up any lumps.



1. mix the powders for 15 to 30 seconds.
2. add the liquid (Acrystal Aqua + pigment + thixotropant)
3. at the beginning, the mixture is very thick, then it suddenly becomes more fluid after a while.
4. continue mixing until you obtain a homogeneous mixture.
5. let it bubble for a few moments. Acrystal Aqua is ready to use.

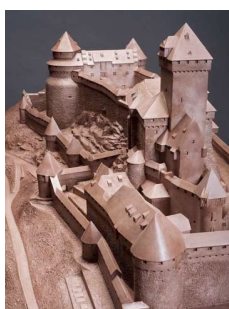


Use (Minimum temperature 12°C)

Pot life :

- 30 to 45 minutes at 20°C
- 5 minutes at 30°C

Always pour or apply the product continuously.



Casting



Application on a polystyrene foam or other type support

ATTENTION: When strengthening with glass fibre, it must be of the AR (alkali-resistant) type.

Setting

It is imperative to keep the Acrystal Aqua object in a humid environment for at least 72 hours. To do this, it will be sufficient, for example, to cover the product with plastic film.

Demoulding

Unmoulding is possible after 12 to 18 hours.

Curing

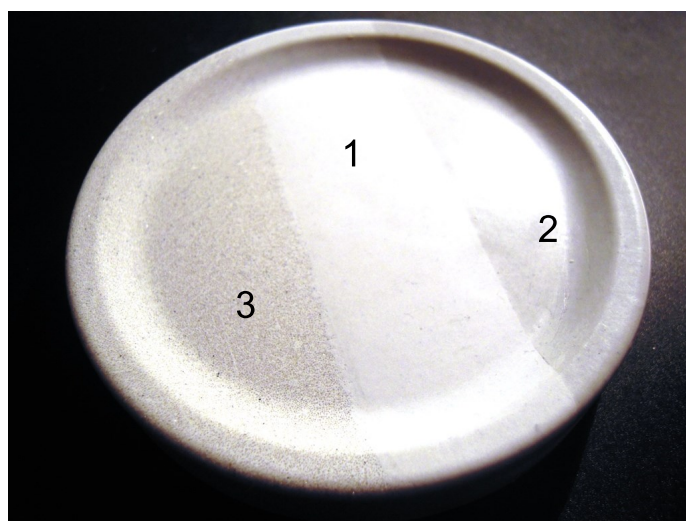
- during the first 3 days it is imperative to:
 - keep the Acrystal Aqua object in a humid environment (for example under plastic film) or even immersed in water at 20°C.
 - avoid storage in a dry, warm and ventilated place.
- Acrystal Aqua takes 3 weeks to fully cure. Best results are obtained by keeping the parts moist or submerged throughout this time.
- More than 50% of the final strength is achieved after 1 day. More than 85% after 1 week.

Finishing

Three finishes are available after curing of the product :

1. Matt

After hardening, the surface of the casting is covered in a light, white film which can just be washed off.



2. Shiny

After full curing:

1. polish the surface with a fine wire wool (use typ 000 to avoid scratching the surface).
2. apply furniture pokish (optional).
3. buff with a polishing mop.



3. Sandstone

1. soften the surface of the casting by soaking in diluted hydrochloric acid.
2. brush more or less under water to obtain the desired surface abrasion.

ATTENTION: if abrasion is too severe, you can expose glass fibres.

